

## TECHNICAL RIDER AUDITORIUM

### AUDITORIUM

The Theatre Viriato is a performance room, prepared to present Theatre, Dance and Music performances, with the capacity for 322 persons. This room is characterized by the typical proscenium stage: central fixed stage, audience with pit (front and dress boxes) and a Regie room.

#### MAP

**LEVEL 0:** Audience (regie at the back of the audience), Stage, Production Office, Technical Office;

**LEVEL 1:** Stage balcony, access to the grid;

**LEVEL 2:** Public Area, Light and Sound Regie.

### STAGE

The stage has an orchestra pit with a lifting platform. This platform can be lifted from the orchestra pit level until audience or stage level with variable height.

The back stage has access through a loading dock door (3,50m width x 2,30m height).

### STAGE DIMENSIONS

#### STAGE (useful area/box):

- Width Rear: **16,47m**
- Width Front: **12,80m**
- Height until the grid: **12,70m**
- Height until the stage balcony: **5,64m**
- Depth from the proscenium until the last pipe: **9,10m**
- Depth from the orchestra platform: **11,41m**
- Front aperture **8m**

#### PROSCENIUM

- Max. Height: **8,93m**
- Main border height: **variable**
- Width: **8,10m**

#### ORCHESTRA PIT

- Width: **7,95m**
- Depth: **1,9m**
- Max. Height (from stage level): **- 2,95m**

**NOTE:** There are three stairs exits on stage that accesses to the public area of the theatre, to the trap room, dressing rooms and offices.

## STAGE MACHINERY

- House Curtain (red) American way – manual opening
  - Motorised/Electrified Pipe System:
    - 14 controlled by a console next to proscenium, with standard speed and the motors
    - in the grid 400 Kg / pipe).
    - 5 controlled by individual hand switch at the stage balcony, with two speed levels (300Kg / pipe)
- 

## PLATFORMS

- 8 Professional 22 – Nivoflex – 5 adjustable heights: 20, 40, 60, 80, or 100cm
  - 12 platforms type Nivoflex – 5 adjustable heights 20, 40, 60, 80, or 100cm
  - Dimensions of each: 200cm x 100cm
  - Maximum charge capacity: 750 Kg/m<sup>2</sup> = 1 653.75 pounds
- 

## STAGE CLOTH

- 2 half velvet back cloth (5m x 10m)
  - 2 half flannel back cloth (7m x 7m)
  - 1 Flannel back cloth (7m x 12m)
  - 1 White backdrop / cyclorama (12m x 7,5m)
  - 4 Flannel borders (12m x 3m)
  - 1 Main border (12m x 3m) (Fixed)
  - 1 House curtain (red velvet) American opening
  - 10 Flannel legs (2,95m x 7m)
- 

## STAGE FLOOR

- 7 black / white linoleum (1.60m x 10m)
- 

## PROJECTION

- 1 square truss 30x30 cm, 9 m long and 5.5 m high.
- 1 perforated projection screen 8 m wide by 5 m high
- 1 White backdrop PVC 12m x 7m

## LIGHT EQUIPMENT

CONSOLE 1: GRAND MA3 ONPC COMMAND WING XT + FADER WING

CONSOLE 2: AVAB ETC CONGO

DIMMERS (IN THE GRID): 216 x 16A  
6 x 32A

LIGHTING		
6	PC ALTO STRAND	2000W
6	PC ADB C-201	2000W
30	PC ADB C-103	1000W
26	PC ADB C-51	650W
2	FRESNEL ADB SH-50	5000W
12	FRESNEL ADB F-101	1000W
15	PROFILE ROBERT JULIAT 614 SX 16°/35°	1000W
20	PROFILE STRAND OPTIQUE 15°/42°	1200W
28	PROFILE ADB DS-54 18°/38°	650W
36	PAR 64 (CP 60, CP 61 E CP 62)	1000W
10	PAR 36 PINSPOT	30W
4	CCT STARLETTE ZOC98 4 SQUARE CYCLO.FLOOD	1000W
1	FOLLOW SPOT ROBERT JULIAT 10°/22°	1200W
6	ETC SOURCE FOUR 25°/50°	750W
6	IRIS PROFILE STRAND OPTIQUE 15°/42°	1200W
6	IRIS PROFILE ADB DS-54 18°/38°	650W
6	GOBO HOLDER "M" PROFILE STRAND OPTIQUE 15°/42°	1200W
6	GOBO HOLDER PROFILE ADB DS-54 18°/38°	650W
15	GOBO HOLDER "A" PROFILE ROBERT JULIAT 614 SX 16°/35°	1000W

LED		
12	STUDIO PAR LED 64 CAN 18 X 8WRG8BAQ8W	CAMEO
10	ROBE ROBIN LEDBeam 350	ROBE
12	PAR LED - BEAMZ - BT410	BEAMZ

EFFECTS		
1	STROB LIGHTTEC LS 1500	1000W
1	HAZEMAKER ROSCO	
1	SMOKE MACHINE JEM ZR44	

### GUTTER ELECTRIFIED EC

9 ELECTRIFIED PIPES (12 UNPAIRED CIRCUITS 16A): 1 FIXED PROSCENIUM and 8 REMOVABLE STAGE.

10 GUTTERS MOBILE TOWERS (8X16A), 5 ON THE LEFT SCENE, 5 ON THE RIGHT SCENE.

**NOTES:**

The pipe n.º 2 is used as a royal borders.

The pipe n.º 3 is used for the curtain.

If using house curtain, we recommend not using the rod n.º. 4 for the motion due to the proximity of the curtain, her struggle in projectors.

**FILTERS**

**COMPANIES HAVE TO BRING THEIR OWN COLOUR FILTERS. THE TEATRO VIRIATO DOESN'T ASSUME ANY RESPONSIBILITY FOR THE LACK OF THIS MATERIAL.**

**SOUND EQUIPMENT**
**MICROPHONES**
**DYNAMIC**

8	SM 58 LC	SHURE	
6	SM 57	SHURE	
1	BETA 52A	SHURE	
4	M 420 N(C)	BEYER DYNAMIC	
1	M 201 TG	BEYER DYNAMIC	
4	TGX 80	BEYER DYNAMIC	
1	TGX 50	BEYER DYNAMIC	
1	M88 TG	BEYER DYNAMIC	

**WIRELESS**

2	GLXD 4 / SM58	SHURE	
1	receptor SHURE ULXD4E G51 470-534 MHZ	SHURE	
1	emissor ULXD2 SM58 G51 470-534 MHZ	SHURE	
6	EW512 G3 eW 500 receiver sk 500 sender	SENNHEISER	microphone - Lavalier SENNHEISER MKE2 - EW / Headset microphone - the t.bone HeadmiKe - O (with two ears)

**CONDENSED**

6	SM 81 - LC	SHURE	
3	BETA 98	SHURE	3 CLAWS AD98 E A98KCS
2	AKG PZM 30D	AKG	
2	PCC 160	AKG	
2	C414 B	AKG	
1	C1000 S	AKG	
1	MCE 83	BEYERDYNAMIC	
1	CK 703/CV720	BEYERDYNAMIC	
2	ATM350U	AUDIO-TECHNICA	

CONDENSED			
8	PRO 45	AUDIO-TECHNICA	
6	AT 2050	AUDIO-TECHNICA	
4	NTG - 4	RODE	Hiper cardioid (shotgun)
2	MX418	SHURE	
DI – BOXES			
10	AR-133	BSS AUDIO	ACTIVE
6	D1	BOSS	DI-BOX ACTIVE
AUDIOVISUALS			
1	CINEMA PROJETOR DIGITAL 4K	CHRISTIE	Objective CP-4415-RGB
1	DIGITAL CINEMA SERVER - DOLBY	GDC - SR1000	
1	VIDEO PROJECTOR - EPSON	EB-PU2213B	FIXED - standard zoom lens ELPLM15
1	VIDEO PROJECTOR - PANASONIC	PT - EW640 5.800 LUMEN	Mobile - standard zoom lens 1,7 - 2,8:1
1	VIDEO PROJECTOR - PANASONIC	PT - D5700E 6000 LUMEN	Mobile - standard zoom lens 1,8 - 2,4:1
1	VIDEO PROJECTOR - PANASONIC	PT - VX605N 5500 LUMEN	Mobile - standard zoom lens 1.2 - 1.9:1
1	VIDEO TABLE BLACK MAGIC	ATEM TELEVISION STUDIO 4K8	
PROCESSOR SIGNAL			
EFFECTS			
1	EFFECTS PROCESSOR	SPX 2000	YAMAHA
EQUALIZERS			
4	GQ600	XTA	
SOUND CONTROL			
1	X32	BEHRINGER	
1	DIGITAL SNAKE BEHRINGER S-32	BEHRINGER	
1	DIGITAL QU 24	ALLEN HEATH	
1	DIGITAL SNAKE ALLEN & HEATH AR2412	ALLEN HEATH	
1	GI 2400	ALLEN HEATH	
1	EPM 12	SOUNDCRAFT	
1	SIGNATURE 12 MTK	SOUNDCRAFT	

PA			
FIXED PA			
4	FLEX POINT 12	MARTIN AUDIO	TOPS PA
2	SX 215	MARTIN AUDIO	SUB PA
2	FLEX POINT 4	MARTIN AUDIO	FRONT-FIELD
6	BLACKLINE X8	MARTIN AUDIO	SURROUND
4	EM26	MARTIN AUDIO	CLUSTERS
AMPLIFICATION			
1	IK81	MARTIN AUDIO	TOP - FOH
1	IK42	MARTIN AUDIO	SUB - FOH
1	VIA 2004	MARTIN AUDIO	SURROUND
1	USA 900	QSC	CLUSTERS
SOUND STAGE			
MONITORS			
5	WM 0.5 - 125 W	MARTIN AUDIO	STAGE MONITORS
4	STINGER 12 G2	LD SYSTEMS	
4	STINGER 15 G3	LD SYSTEMS	
2	SISTEMA IN-EAR SENNHEISER EW IEM G4	SENNHEISER	WHITHOUT EAR
AMPLIFICATION			
2	MCAUDIO E15	MC2	
3	EUROPOWER EP 4000	BEHRINGER	
MOBILE PA			
2	F 12+	MARTIN AUDIO	TOP
2	S18+	MARTIN AUDIO	SUB
1	USA 900	QSC	FRONT-FIELD
1	USA 1310	QSC	SURROUND
CABLES			
1	NEUTRIK / KLOTZ	MULTIPAR CABLE	24 + 8 (FOH) 24 + 8 (STAGE)

TRIPODS			
15		TRIPODS MICROFONE HIGH	
7		TRIPODS MICROFONE LOW	
4	K&M 210/9 BL	TRIPODS MICROFONE HIGH	
4	T K&M 252 BL	TRIPODS MICROFONE MEDIUM	
4	K&M 25950 BL	TRIPODS MICROFONE small	
3		TRIPODS FOR TABLE	
2	GOOSENECK XLR GMS23XLRB		Gravity
4		SOUND TRIPODS	

INTERCOM			
4	HOLLYLAND	SOLIDCOM C1-4S	FULL - DUPLEX WIRELESS INTERCOM
1	CANFORD	INTERCOM SYSTEM	5 POINT'S + CENTRAL FIX

**NOTE:** The system PA is fixed, so the speakers can't be moved.

BACKLINE			
1	ACUSTIC PIANO	STEINWAY MODEL B211	"LENGTH OF 2,11 METERS"

## CONTACTS

### TECHNICAL COORDINATION

PAULO MATOS > [psam@teatroviriato.com](mailto:psam@teatroviriato.com)

**TEATRO VIRIATO** | CENTRO DE ARTES DO ESPECTÁCULO DE VISEU  
LARGO MOUZINHO DE ALBUQUERQUE – 3500-160 VISEU · PORTUGAL

**Mobile.** (+35) 965 521 550 | **tel.** (+35) 232 480 110

supported by

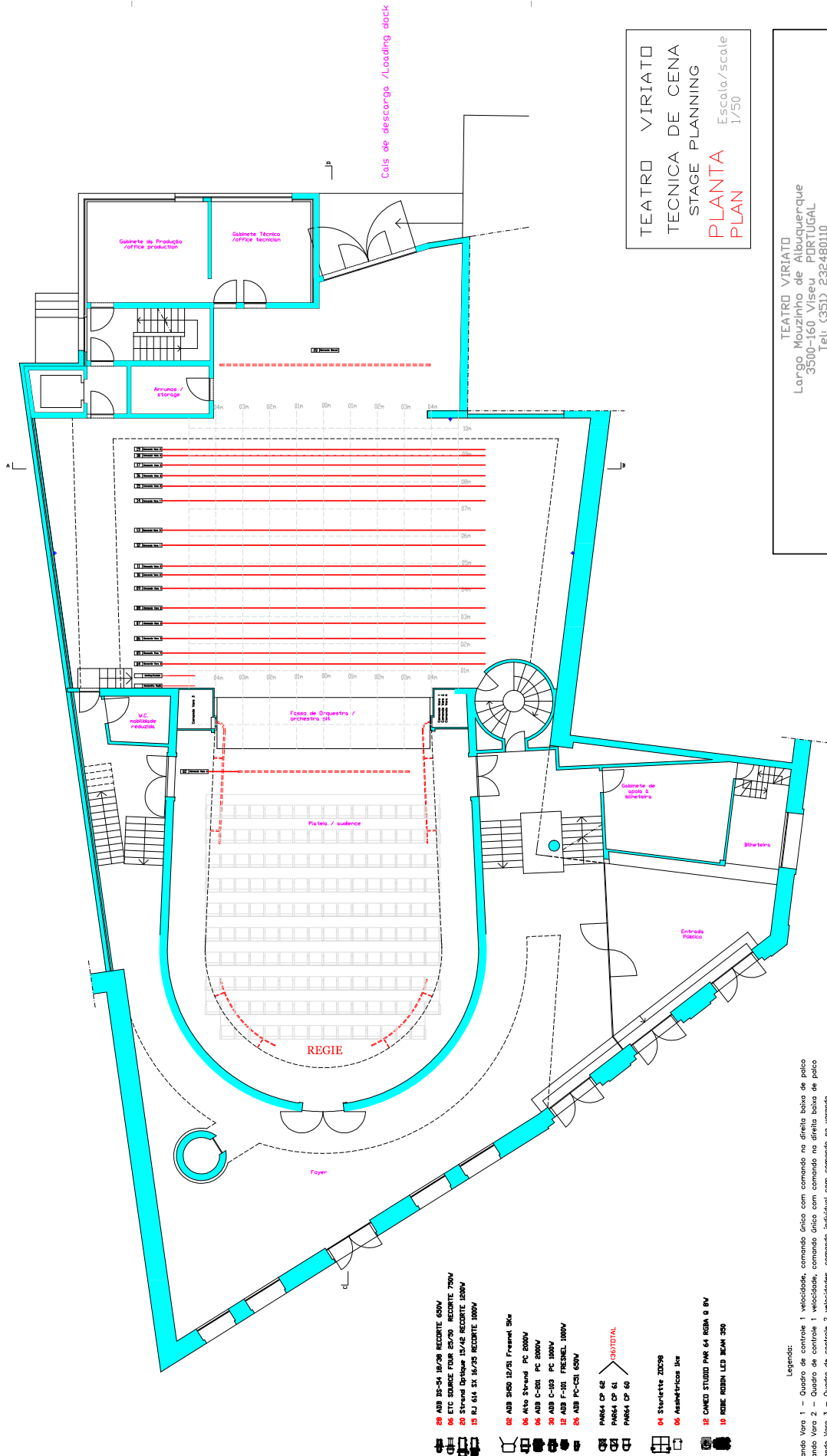


CULTURA, JUVENTUDE  
E DESPORTO



This cultural device integrates:



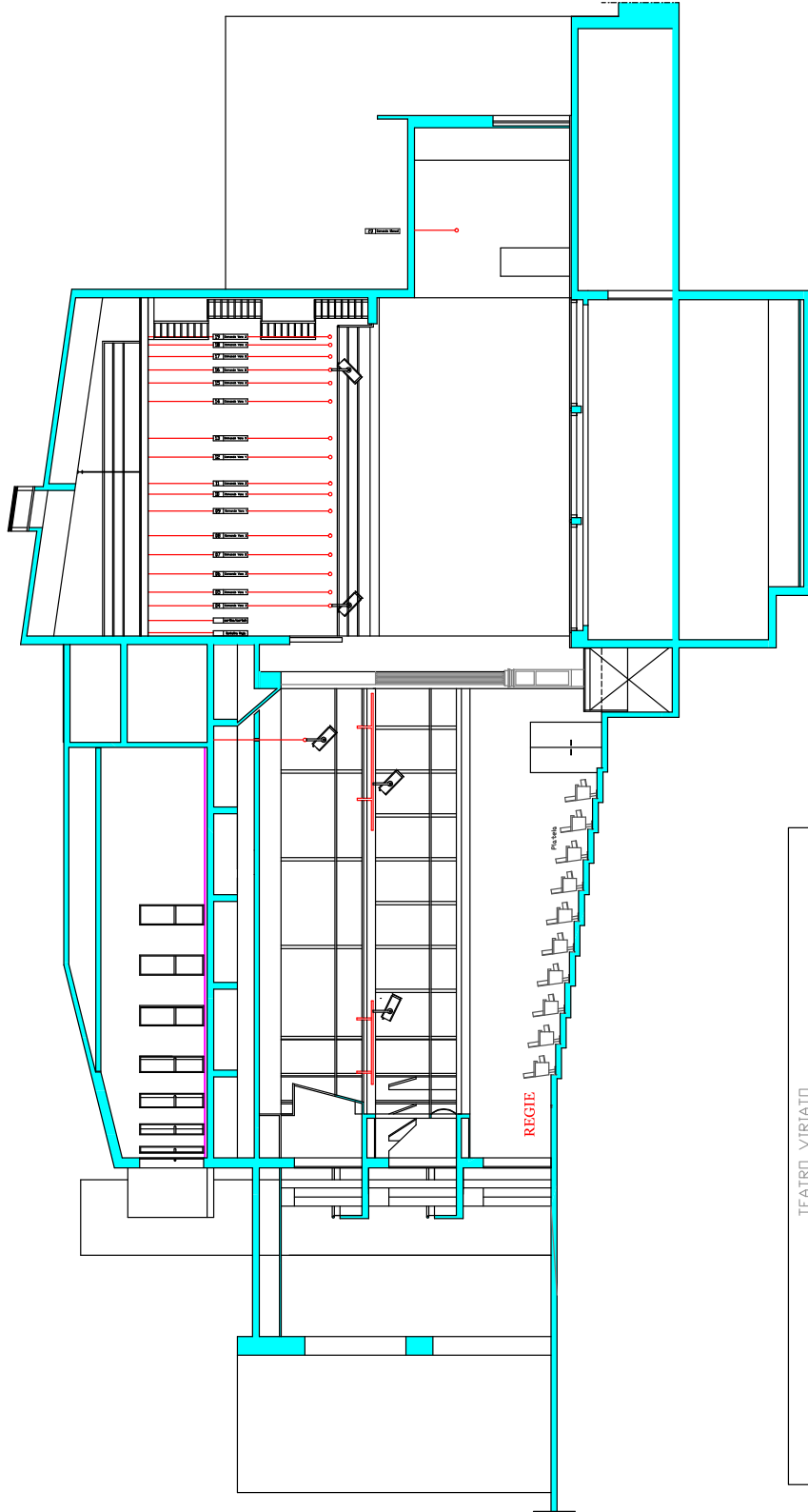


TEATRO VIRIATO  
TECNICA DE CENA  
STAGE PLANNING  
**PLANTA** Escala./scale  
**PLAN** 1/50

TEATRO VIRIATO  
Largo Mouzinho de Albuquerque  
3500-160 Viseu PORTUGAL  
Tel: (351) 232480110  
[www.teatroviriato.com](http://www.teatroviriato.com)  
[www.teatroviriato.com/pt/menu/informacoes-gerais/informacoes-tecnicas/](http://www.teatroviriato.com/pt/menu/informacoes-gerais/informacoes-tecnicas/)

- 05 ADB 80-54 10/20 INCENTE 650W
- 06 ETC SOURCE FOUR 250W INCENTE 750W
- 07 STRONG LIGHTS 12/16 INCENTE 100W
- 08 RJ 614 3x 10/20 INCENTE 100W
- 09 ADB 3450 12/20 Framer 50x
- 10 Ato Strand FC 2000W
- 11 ADB C-101 FC 1000W
- 12 ADB C-102 FC 1000W
- 13 ADB F-101 FRESNEL 1000W
- 14 ADB FC-C21 650W
- 15 PAR64 CP 6E
- 16 PAR64 CP 6I
- 17 PAR64 CP 6E
- 18 Starlette Z0208
- 19 Assabrilicos lite
- 20 CAMEO STUDIO PAR 64 RDM 0 8V
- 21 RDMIE ROBIN LED BEAM 350

Legenda:  
Comanda Vara 1 - Quadro de controle 1 velocidade, comando unico com comando na direita baixo de palco  
Comanda Vara 2 - Quadro de controle 1 velocidade, comando unico com comando na direita baixo de palco  
Comanda Vara 3 - Quadro de controle 2 velocidades, comando individual com comando na varanda  
Comanda Vara 4 - Quadro de controle 1 velocidade, comando individual com comando na direita baixo de palco  
Pipe Command 1 - Table 1 speed control, single command with command in the lower right of the stage  
Pipe Command 2 - Table 1 speed control, single command with command in the lower right of the stage  
Pipe Command 3 - Table 2 speed control, with individual control command on the porch  
Pipe Command 4 - Table 1 speed control, with individual control command in the lower right of the stage



TEATRO VIRIATO  
TECNICA DE CENA  
STAGE PLANNING  
**PLANTA** Escala/scale  
**PLAN** 1/50

TEATRO VIRIATO  
Largo Mouzinho de Albuquerque  
3500-160 Viseu PORTUGAL  
Tel: (351) 232 480 110  
[www.teatroviriato.com/pt/menu/informacoes-gerais/informacoes-tecnicas/](http://www.teatroviriato.com/pt/menu/informacoes-gerais/informacoes-tecnicas/)  
[www.teatroviriato.com](http://www.teatroviriato.com)